

enVision Math Online Parent Directions

How to get online

This website works best when viewed on one of these free web browsers:



Mozilla Firefox



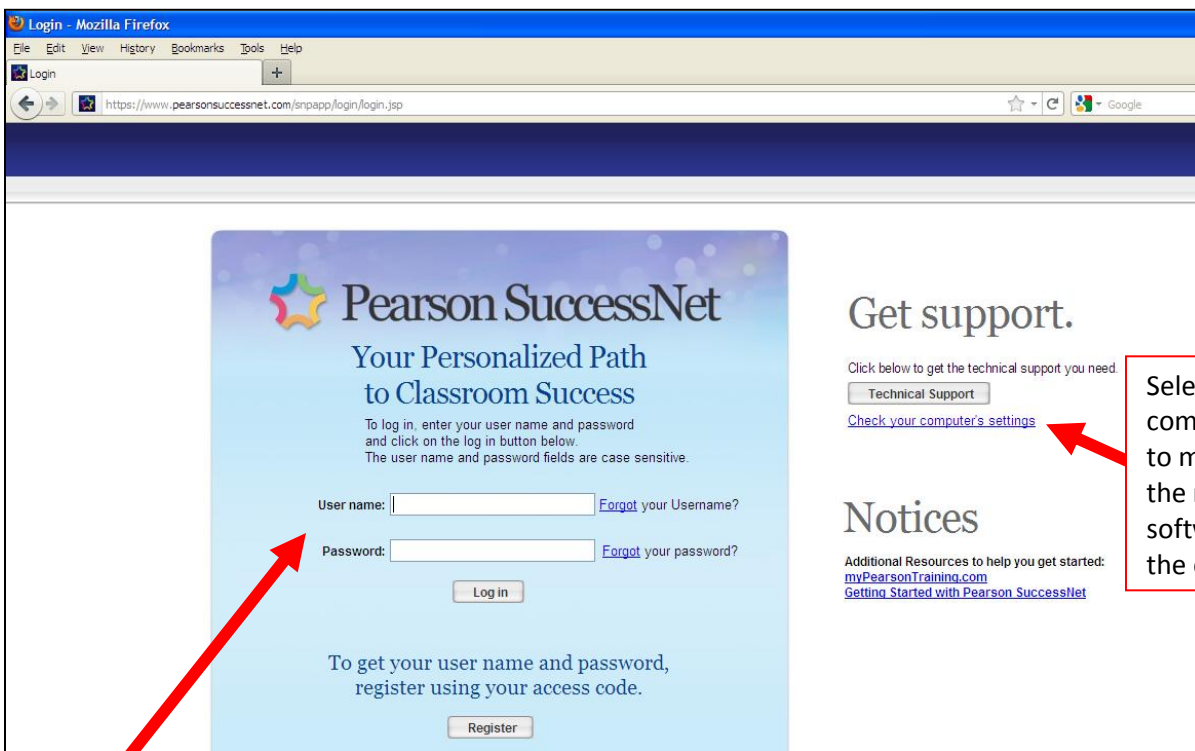
Safari



Chrome

enVision Math Website:

www.pearsonsuccessnet.com



Select "Check your computer's settings" to make sure you have the most updated software required for the enVisions website

How to log on to the website

The user name is the first 5 letters of the **student's** last name (or less if the last name is shorter than 5 letters, e.g. FOX), the first 3 letters of the **student's** first name, and three zeros (or zero, zero, one if three zeros does not work) all in **CAPITAL** letters.

The password is asd103 with lowercase letters.

EXAMPLE (Jeff Swanson)

User name:

SWANSJEF000

SWANS JEF 000
5 last 3 first

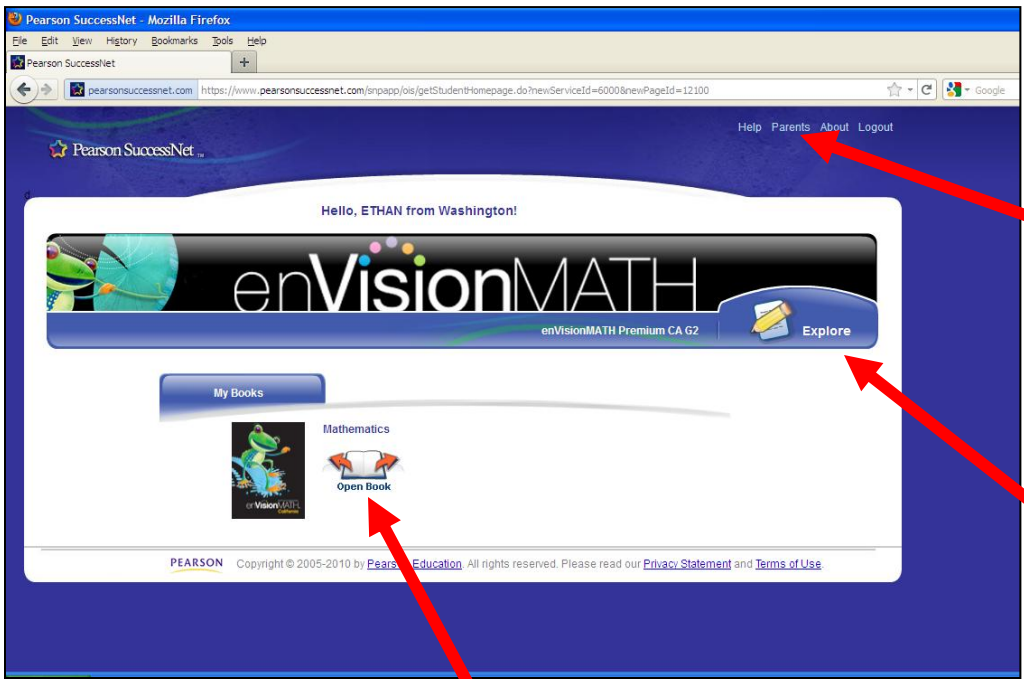
OR

SWANSJEF001

SWANS JEF 001
5 last 3 first

Password: **asd103**

How to use the enVision site



Select "Parents" to see your child's progress

NOTE There will only be information here if your child's teacher is using the online testing and/or assignments

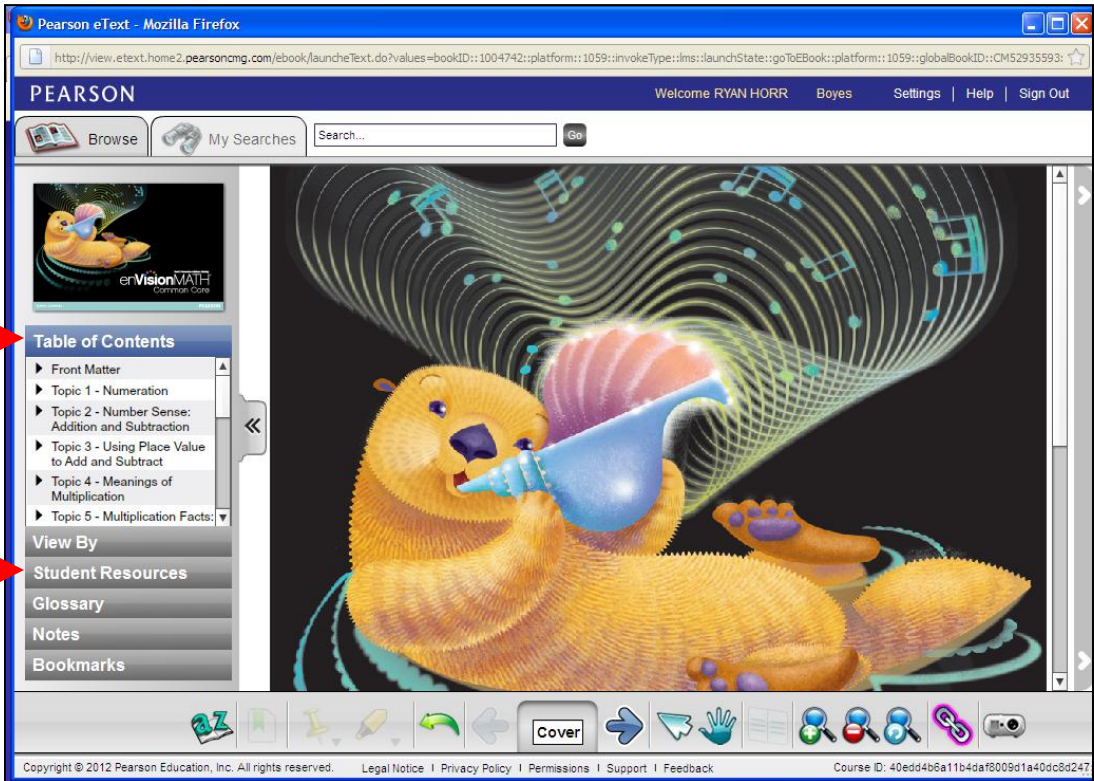
Select "Explore" to view teaching by topic (or this will say "To Do" if your child has assignments from his/her teacher)

Select "Open Book" to view the book and other resources

Allows you to browse through the book

NOTE Click on the tiny arrows on the left to open up more content

Allows you to view some student resources



Turn the page by clicking this gray bar